

[View this email in a browser](#)



# Volunteer update

Welcome to your monthly newsletter - keeping you updated with news relevant to all volunteers, as well as key group-specific news.



## General updates



### Making MS a priority

With the Labour Party now at the helm, we'll be watching and



### Volunteer Voice

Join us for some organisational updates and to ask any questions you

contacting new ministers to make sure they deliver real change for the MS community.

[Find out more](#) □

have. We'll also hear about what we're doing across the organisation to attract younger volunteers, and how our groups can learn from this.

[Sign up](#) □

## Our plans following the General Election

It's official: Keir Starmer is our new Prime Minister. With a new government, this is a huge opportunity for us to push for lasting change for people with MS across the UK.

It's up to us to make sure the government's priorities make real change for the MS community. But we need your help to hold them accountable.

This summer, we're reaching out to new MPs to show them how they can support the MS community. Want to get involved? You, or your local group, can meet with your MP and share the issues that matter most! Email us at [campaigns@mssociety.org.uk](mailto:campaigns@mssociety.org.uk) and we'll help set up a meeting.



### Assemble Volunteer User Panel update

Find out what our panel has been up to since it formed, and how members are helping to ensure the new system meets our volunteers' needs.



### Research Reporter July 2024

Find out the very latest in MS science, with a special focus on the MS Frontiers 2024 conference, which took place last week.

[Find out more](#)
[Find out more](#)

## MS Society Summer Raffle

Playing MS Society raffles is a great way to have some fun and support people living with MS while you do! The Summer Raffle is now live and, if you play today, you'll have the chance to win £4,000, as well as over 20 other great prizes. Enter by **\*\*Sunday 8 September\*\*** on [mssociety.raffleentry.org.uk](https://mssociety.raffleentry.org.uk) or call 0330 002 0267.



### Supporter event in Northern Ireland

Join us in Belfast in October to hear how the vital funds we receive are used to enable groundbreaking research and provide services in Northern Ireland. And share the invitation with our supporters on your channels.

[Find out more](#)


### Face-to-face fundraising update

We've seen a strong start to our face-to-face fundraising campaign, using professional fundraisers, which restarted just over a month ago. Learn more about our donors and how we'll share where our fundraisers will be.

[Find out more](#)



# Volunteering in action



## I've become part of an extraordinarily wonderful second family

Lynn is a Support Volunteer at our Hinckley and District Group. She tells us how she got involved, and how helping others has enriched her own life.

[Read Lynn's blog here](#) □



## Joining my local group gave me the volunteering bug

Simon's been volunteering with the Yeovil and Sherborne District Group since 2013. He tells us how joining his local group has given him friends for life and opened up new volunteering opportunities.

[Read Simon's blog here](#) □

**\*\*\* If you'd like to share your own experiences of volunteering, please let us know by completing the [online form here](#) \*\*\***



# Updates for groups



## New online grants training coming very soon!


We're launching a new grants eLearning, covering what your group needs to do to offer and assess grants locally. The guidance is there to dip into whether you're new to grants or would just like a refresher.

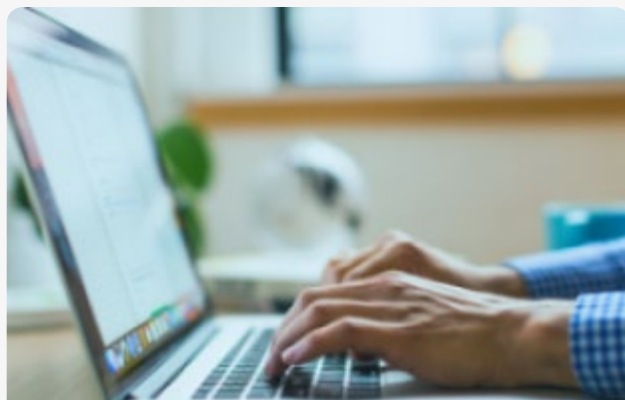
[Find out more](#) 



## Would you like to offer Cost of Living Grants?

We've started rolling out the new Cost of Living grants scheme to all groups that would like to offer them. We're running sessions in July, where you can find out more about the grants and how to get started.

[Find out more](#) 



## Are the software,



## Maintaining access to

## online tools and apps you're using safe?

Please follow this guidance when using software, online tools and apps to ensure they meet the privacy rights of our community.

[Find out more](#) 

## your social media

Last year we asked groups to share access to their social media accounts, to protect the longevity of them. If you've not already done so, or you're new to looking after your groups social media accounts, find out why and how you should do this.

[Find out more](#) 

## This month's Top Tips!

Welcome to our 'Top Tips' section. Every month we'll share useful ideas and/or 'how to' hints to help you carry out your volunteering role.

---

This month's top tips will be delivered in person by Frank Kelly, Group Coordinator of the Aberdeen Group, at a **special webinar** about '**rebuilding a local group**'.

Join us on Zoom on **Tuesday 23 July at 11am** for a conversation covering some of the highlights and challenges Frank faced when reviving the group, which was near to closure. He'll tell us how he worked with his group volunteers and the Volunteer Support Team to get it back up and running. And he'll share some tips on making it a success.

There'll also be time for questions at the end of the session, and you're invited to submit any questions you may have in advance via the booking form.

This is a pilot webinar, and we'd love to know how useful you find it to hear from another group, so please do join us.

For more details on what Frank will be covering and to book your place, please [register via this Eventbrite link](#).

## Local group donations

A continuing thank you to all our groups that have generously donated to support our research projects and UK-wide services.

[Find out more](#) ▢



## Events

### Events for all volunteers

**Volunteer Voice:** Thursday 1 August at 3pm

**Virtual support events:** Information and skills sessions for different stages of the MS journey (including Staying Active with MS)

**Training troubleshooting session:** Various dates available

**2024 fundraising events calendar**

### Events for group volunteers

**Cost of Living Grants information sessions:** Friday 19 July at 2.00pm, Thursday 25 July at 11.00am, Monday 29 July at 6.30pm

**Rebuilding a local group webinar:** Tuesday 23 July at 11am

**Weekly drop-in with Volunteer Support Team:** Every Tuesday at 2pm

**Monthly Health and Safety drop-in:** First Tuesday of every month at 3pm

**Enthuse onboarding training:** Various dates available

**Monthly fundraising drop-in:** First Wednesday of every month at 2pm

Let's stop MS together



You're receiving this email because you're one of our volunteers.

You're subscribed as  
jo.webber@mssociety.org.uk

[Privacy & Cookie Notice](#)

Registered charity nos 1139257 / SC041990. Registered as a limited company in  
England and Wales 07451571